



AGM

4th March 2023
14:00 – 16:00

community
action



for our
energy
future

Agenda

Minutes of last year's AGM and election of the board

Chair's Report

Operations Report

Treasurer's Report

Interest and Capital Payments (application of surplus)

Communications Report

Membership

Election of the Board



Minutes of Last Year's AGM

Minutes AGM 2021

- ❁ Minutes AGM 2022 – To Agree
- ❁ Action Items
- ❁ Any Queries?
- ❁ Any Changes / Disputes?



Chair's Report

The Chair

- ❁ I am a Chartered **Electrical Engineer**
- ❁ I work on multi-MW **Renewable Energy** schemes
- ❁ Including onshore and offshore wind, **solar** & battery energy storage
- ❁ Doing **grid connections**, network design, construction management, **development support**
- ❁ I love living in **The Outdoor City**, Sheffield

Sheffield Renewables

We are... a **community and a social enterprise**, that develops, funds, builds, owns and operates renewable energy schemes...

Run by and for local people...

Profits support local initiatives...

All about **participation**: involving local people as **volunteers** and **investors...**

Part of a **growing movement of community energy projects** across the country...



- ❁ Successful year of **generation**
 - ❁ *Higher yield than the original estimates*
 - ❁ *Over 1 000 000 kWh solar energy generated*
(that's over 300 households for a year!!!)
 - ❁ *Payment holiday for Paces complete*
- ❁ New **volunteers**
- ❁ Moved out of our **office** at Heeley City Farm
- ❁ Working on **new projects**
- ❁ Increased rates by **less than RPI** last year

Events & Meetings

❖ Community Energy

- ❖ **CEE:** Community Energy Policy and Potential
- ❖ **Big Solar Co-op:** Approaching Host Sites
- ❖ Community Energy Forum: Getting our Networks to **Net-Zero**
- ❖ Big Solar Co-op: **Lease Agreements**
- ❖ **CES:** Overview of New Business Models

❖ Electricity Networks

- ❖ ENA: West and **South Yorkshire** Decarbonisation Conference
- ❖ **Regen:** Community Energy with NPG
- ❖ **Energy Local**

Potential New Projects

❁ Five Rivers Co-housing **12kWp**

❁ Lease / PPA signed → construction planning

❁ The Oakes **30kWp** (ground-mounted)

❁ Agreement in Principle → planning and grid

❁ Parkhill Flats **2x 25 kWp**

❁ Agreement in Principle → technical considerations & lease/PPA

Five Rivers: Co-housing Project - North Sheffield

- On Common House

Generation

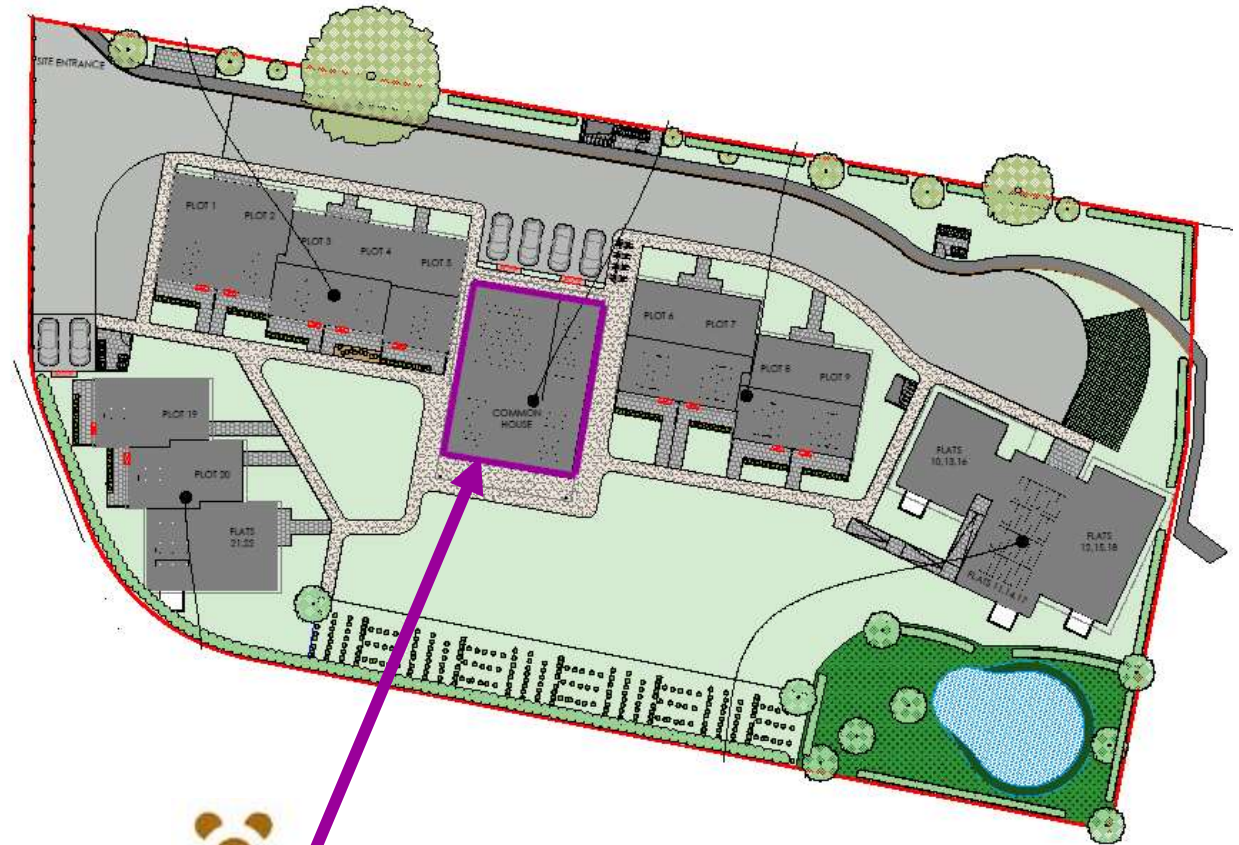
- 12kWp scheme
- Production 9,500 kWh

Usage

- Communal kitchen
- Laundry
- Air Source Heat Pump

Timeline

- Installation April/May
- Operation July August



Projects Considered

- ❖ Professional Energy Purchasing
 - ❖ Organisation with **links to SMEs** in the region – requested a “finders-fee”
 - ❖ Didn't work as the model is **not commercial enough** to work with a corporate

- ❖ Whirlow Hall Farm (part funded with Gripple)
 - ❖ Planning permission for a ground mount **delayed**
 - ❖ Project **progressed without SR** funding support

Further Project Potential

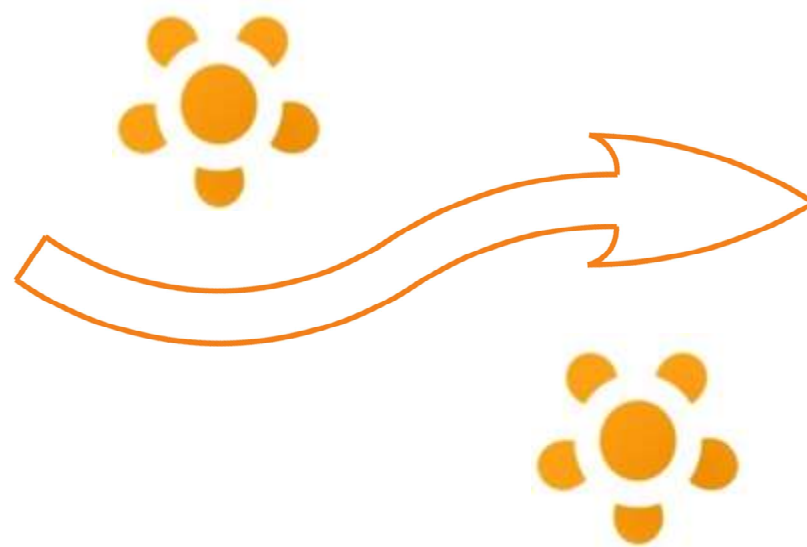
- ✿ South Yorkshire Fire and Rescue
- ✿ Leisure Centres (e.g. SiV)
- ✿ Parkwood Springs
- ✿ Council : Hanover Tower Block

Any ideas from members welcome!!

Our Future Plans

Change of Approach

FiT



Subsidy
Free !!!

FiT VS Post-FiT

	FiT	Post-FiT
Generation Tariff	£ 0.15 / kWh	£ 0 / kWh
PPA	£ 0.11 – 0.16 / kWh	> £0.22 / kWh
Export Tariff	£ 0.055 / kWh	> £0.055 / kWh (??)
Project Duration	~ 20 years	< 20 years (15?)

New Opportunities

- ❁ Local Electricity Bill – a way to allow sale of electricity using the distribution system (as a registered supplier)
- ❁ Smart Export Guarantee – additional revenue for exported energy – £0.05/kWh
- ❁ Energy Local – a way to increase revenue of exported energy

Why we do it ?

- ❖ CO2 savings, social capital, **community** wealth building, green initiatives, **environment**, society
- ❖ Learning
 - ❖ **Different roles** as volunteers or board roles
 - ❖ New **technologies**
 - ❖ **Connections** with local organisations & individuals
- ❖ New ways of doing business:
 - ❖ **Social Enterprise**: profits re-invested
 - ❖ **Co-operative**: democratic decision making
 - ❖ **Community** financed and owned
- ❖ Belief in the strength of **working together**: building a community to work towards a more **sustainable city**



Volunteers & Directors



new !



This could be
you !



new !



new !





Operations Report

Sheffield Renewables Operations

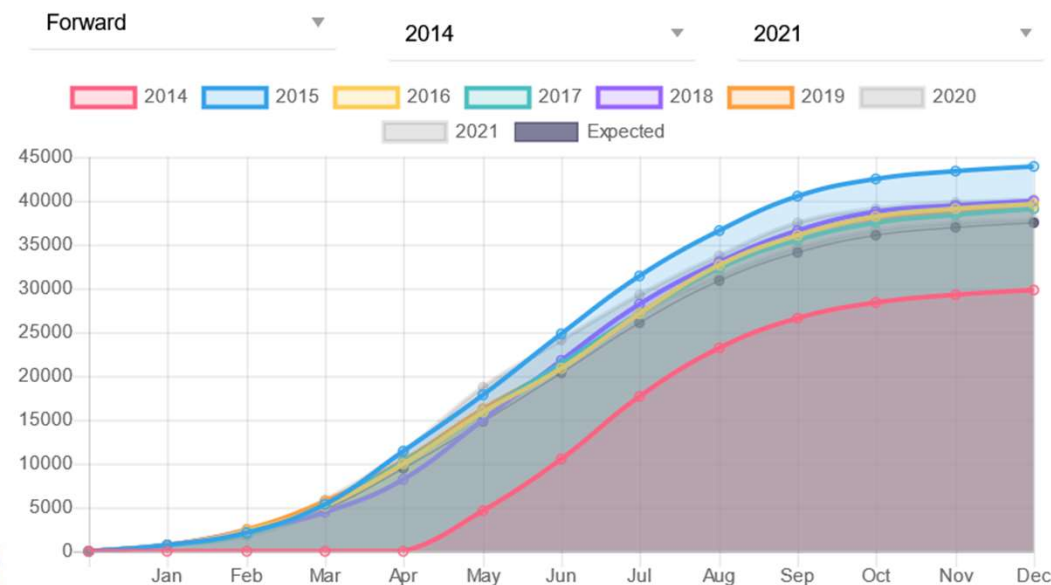
- ❁ **Good customer relations and payments regular**
- ❁ **3 software systems** monitoring production and export
- ❁ Customers billed monthly – all **paying on time**
- ❁ Export market now **under development but currently maintaining Govt fixed rate**
- ❁ **FiT** payments now **smoother** from suppliers

The Campus 50 kW

- Installed **May 2014**
- Total Production **349,807 kWh**
- Contract with **SSE**



Cumulative Readings



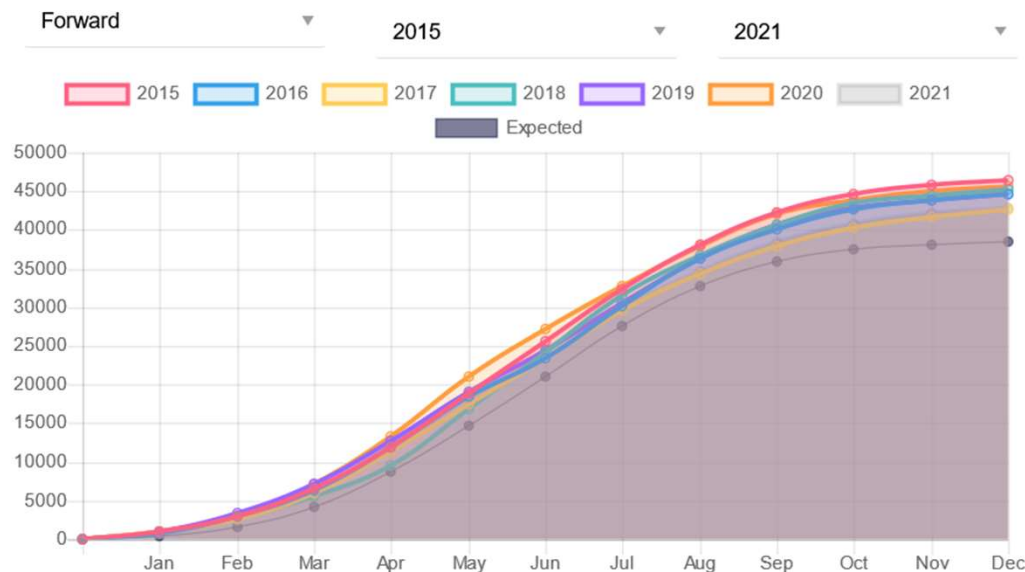
Year	Production (kWh)
2015	43,869
2016	39,624
2017	39,059
2018	40,072
2019	39,170
2020	40,537
2021	37,914
2022	39,933

Swinton Primary School 50 kW

- Installed **November 2014**
- Total Production **360,957 kWh**
- Contract with **Eon**
- New **export meter** fitted 2017
- Total Export **113,745 kWh**



Cumulative Readings



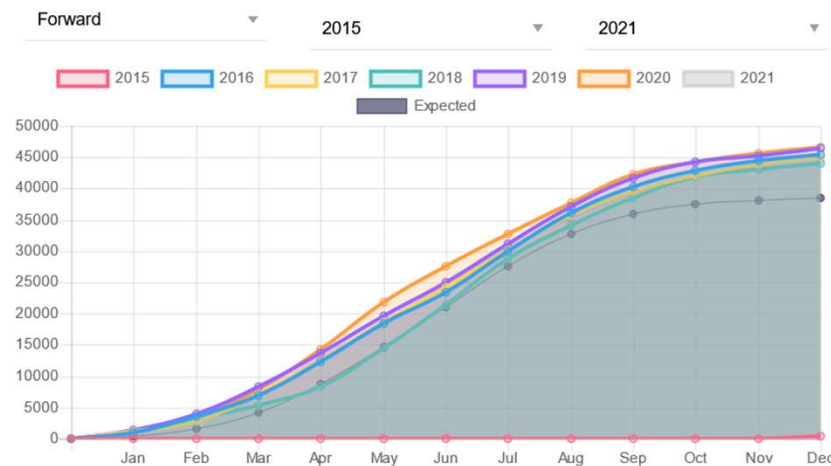
Year	Production (kWh)
2015	46,466
2016	44,612
2017	42,569
2018	45,244
2019	44,649
2020	45,676
2021	42,833
2022	46,798

Attercliffe Police Academy 50 kW

- Installed **November 2015**
- Total production: **322,245 kWh**
- Contract with **Eon**



Cumulative Readings



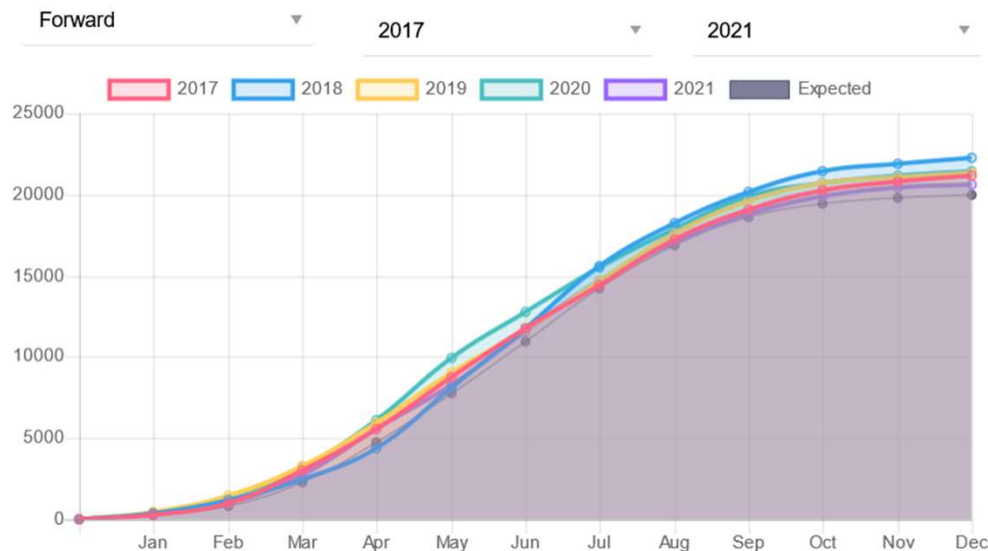
Year	Production (kWh)
2015	43,869
2016	39,624
2017	39,059
2018	40,072
2019	39,170
2020	40,537
2021	44,479
2022	47,989

Lembas 26.4 kW

- Installed **Dec 2016**
- Total Production **129,177 kWh**
- Contract with **Good Energy**
- **Unmetered Export** approx. 15%



Cumulative Readings



Year	Production (kWh)
2017	211185
2018	22258
2019	21367
2020	21475
2021	20662
2022	21,991



Treasurer's Report

Organisation Finances Summary

- ❁ Nearly **£260k** of revenue (electricity sales and fee income) since first scheme became operational
- ❁ Total electricity generation now more than **955,000 kWh** since first scheme became operational
- ❁ Capital returned to investors to date: **£66,571**
- ❁ Interest paid to investors: **£30,491**
- ❁ Community Benefit Fund to date: **£16,769**

SHEFFIELD RENEWABLES LIMITED
Income and Expenditure Account
for the year ended 30th September 2022

	2022 Total £	2021 Total £
INCOME		
Sales	40,241	32,080
Grants and donation	250	1,500
Bank interest	221	476
TOTAL INCOME	40,712	34,056
EXPENDITURE		
Rent and room hire	2,221	2,400
Printing, stationery and office	762	0
Marketing and publicity	695	974
Insurances	1,350	1,348
Legal and professional	755	500
Technology and projects	603	665
Telephone	152	138
Fees and subscriptions	200	200
Interest on shares	3,522	2,700
Sundry	28	0
Depreciation	15,845	15,845
Community benefit fund	3,795	4,598
TOTAL EXPENDITURE	29,928	29,368
Net income/expenditure before tax	10,784	4,688
Taxation	-2,632	0
Net income/expenditure after tax	8,152	4,688
Balance brought forward 1st October 2021	-21,215	-25,903
Balance carried forward at 30th September 2022	-13,064	-21,215

There are no recognised gains or losses other than the surplus for the year.



SHEFFIELD RENEWABLES LIMITED
Balance sheet
As at 30th September 2022

	Notes	2022 £	2021 £
Fixed Assets	3	74,047	89,892
Current Assets			
Debtors	4	943	879
Cash at bank & in hand		118,398	113,704
		<u>119,341</u>	<u>114,583</u>
Liabilities			
Creditors - amounts due within one year	5	-3,566	-864
Net current assets		115,775	113,719
Net assets		189,822	203,612
Funds of the company			
Called up share capital	6	202,886	224,827
General unrestricted fund	6	-13,064	-21,215
Capital employed		<u>189,822</u>	<u>203,612</u>

To agree the accounts and the audit exemption.



End of Year Allocation

- ❖ Capital £201,267 (total)
- ❖ Non-waived Capital £173,186 (£28,081 waived)

- ❖ Capital Repayment
 - ❖ £24,764

- ❖ Interest Payment
 - ❖ £5,195

- ❖ Community Benefit Payment
 - ❖ £3,019

To agree the end of year figures.



Community Benefit Fund

Community Benefit Fund

- ❁ The Community Benefit Fund (CBF) is designed to use a **percentage of revenue (1.5%)** to **support organisations** that have the **same ethos** as Sheffield Renewables.
- ❁ We particularly wish to **support** projects that can achieve a **social benefit** whilst helping the **environment**, for example by addressing **fuel poverty**.
- ❁ The **decision** for where to donate the CBF is down to the **membership**.
- ❁ Each year we do a number of **votes** to decide **where** to donate the CBF.



Community Benefit 2021

- ❁ Last year we allocated **£ 3,211** to the CBF
- ❁ South Yorkshire Energy Centre: **£ 2,568.80**
 - ❁ ***Re-allocated to Citizen's Advice for fuel poverty work in Sheffield***
- ❁ Trine (Solar Investments): **£ 642**

Trine

Account summary

AVAILABLE FOR INVESTMENTS

€1 042

+

OUTSTANDING PORTFOLIO

€1 373

=

TOTAL

€2 415



TONS CO2 AVOIDED ⓘ

77



PEOPLE WITH ELECTRICITY ⓘ

173



LOANS SUPPORTING NO POVERTY

3



LOANS SUPPORTING GOOD HEALTH

3



LOANS SUPPORTING QUALITY EDUCATION

3



LOANS SUPPORTING GENDER EQUALITY

1



Proposed Organisations for this year's CBF

There have been **no suggestions** from the co-op members.

Sheffield Renewables Board proposes that the **CBF is donated** to the following **organisations**:

☀️ 80% Local : **The Gleadless Valley Estate Project**

☀️ 20% International : **Trine**

Community Benefit 2022

- ❁ In accordance with the above, this year we will allocate **£ 3,019** to the CBF
- ❁ Gleadless Valley Project: **£ 2,415**
- ❁ Trine (Solar Investments): **£ 604** (plus reinvesting interest from Trine)

CBF: Suggestions for Next Year

- ❁ We would like the **beneficiaries** of the CBF to **reflect our members wishes**
- ❁ If you have **any suggestions** for next year please **send us an email** with details and **why you think the organisation** would be a great place to **donate / invest the surplus**



Communications Report

Sheffield Renewables Comms

- ❁ **Relaunched website** & refreshed email subscribers
- ❁ **1000** subscribers
- ❁ **3000** twitter followers @sheffieldrenew
- ❁ **1000** facebook followers
- ❁ **98** (and growing!!) LinkedIn followers



Spring & Winter Newsletters

Spring Newsletter

- Delivered to 859
- Opened by 263 (30.5%)

Winter Newsletter

- Delivered to 861
- Opened by 274 (32%)

ANOTHER SUCCESSFUL AGM!



February saw the group get together online to celebrate another successful year for Sheffield Renewables at our AGM. We had a lively and engaging conversation with our shareholding members, who made some excellent suggestions and thanked the board for their continued efforts.

ANOTHER SUCCESSFUL AGM!



February saw the group get together online to celebrate another successful year for Sheffield Renewables at our AGM. We had a lively and engaging conversation with our shareholding members, who made some excellent suggestions and thanked the board for their continued efforts.



PRESSING ISSUES

YORKSHIRE POST



Staying with the theme of tea (sort of), in February we were invited to a "meet and greet" with the Shadow Secretary of State for Climate Change and Net Zero, Ed Milliband. The group has built close ties with Olivia Blake (MP for Huddersfield) who was previously spoken of our work in Parliament. First stop was our partner Lembas, who provide local, fresh produce throughout South Yorkshire, before going on to Sheffield Energy House at Heeley City Farm.

PRESSING ISSUES

YORKSHIRE POST



Staying with the theme of tea (sort of), in February we were invited to a "meet and greet" with the Shadow Secretary of State for Climate Change and Net Zero, Ed Milliband. The group has built close ties with Olivia Blake (MP for Huddersfield) who was previously spoken of our work in Parliament. First stop was our partner Lembas, who provide local, fresh produce throughout South Yorkshire, before going on to Sheffield Energy House at Heeley City Farm.

LET'S RAISE THE ROOF



We're always searching for suitable sites for community solar installation projects. The ideal roof / site is:

- Large (min 200m²), non shaded, preferably southern orientation, and structurally sound
- High daytime electricity usage
- Fully owned or long term lease on the building
- Commitment to reduce CO₂ & benefit Sheffield

If you know of a local businesses that owns roof space for a potential project, please [get.in.touch!](mailto:get.in.touch@sheffieldrenewables.co.uk)

LET'S RAISE THE ROOF

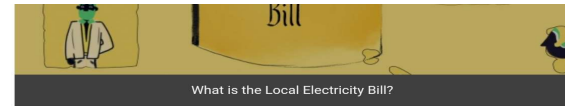
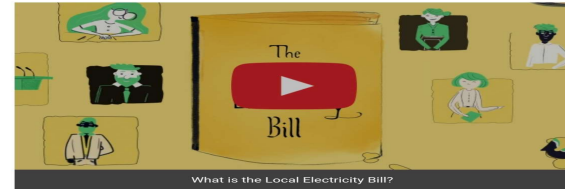


We're always searching for suitable sites for community solar installation projects. The ideal roof / site is:

- Large (min 200m²), non shaded, preferably southern orientation, and structurally sound
- High daytime electricity usage
- Fully owned or long term lease on the building
- Commitment to reduce CO₂ & benefit Sheffield

If you know of a local businesses that owns roof space for a potential project, please [get.in.touch!](mailto:get.in.touch@sheffieldrenewables.co.uk)

THE LOCAL ELECTRICITY BILL IS BACK!



The Local Electricity Bill would enable electricity generators like Sheffield Renewables to become local electricity suppliers. The Bill was introduced in 2019 but has been revived in recent weeks.

To show your support for Local Electricity Bill please send an email to shappsg@parliament.uk using the suggested text below:

PROJECTS IN THE PIPELINE



- What motivates communities to reduce their energy use and use cleaner energy sources?
- Are you interested in knowing more about Community Land Trusts?

We have the opportunity to participate in research projects with a local and international dimension. Follow the links below to give your feedback on these important topics.



- What motivates communities to reduce their energy use and use cleaner energy sources?
- Are you interested in knowing more about Community Land Trusts?

We have the opportunity to participate in research projects with a local and international dimension. Follow the links below to give your feedback on these important topics.

Throughout the last year we have received a steadily increasing number of enquiries for potential projects. Whilst some sites have unfortunately not quite met our criteria for viability we do have a number of promising projects that we are hoping to progress in 2023.



Social Media Engagement

20:37 22%

← Tweet



Natalie Bennett @natalieben · 3d
There needs to be government support to help get projects off the ground: ideal use for "levelling up" money.

But I also know many groups want to help others: [@sheffieldrenew](#)?

Preston Solar Action @Presto... · 3d

Replying to @natalieben
@Power4PeopleUK and 3 others

We are a new community energy group in Preston. There are no groups within 20 miles of us. Where they exist, the closest successful projects are focused on the affluent parts of the county. Ho...

4 6 30



Preston Solar Action
@Prestonsolar

Replying to @natalieben and @sheffieldrenew
Thank you [@natalieben](#).
Wholeheartedly agree! We'd love to talk to [@sheffieldrenew](#). We're looking to build partnerships with businesses and community organisations in Preston and surrounding area right now. It would

Tweet your reply

||| ○ <



Tweets Tweets & replies Media Likes

Sheffield Renewables @s... · 20 Mar 22
[@OliviaBlake](#) in this week's [@shftelegraph](#) with a great mention of us + the importance of the [#LocalElectricityBill](#) Renewable [#CommunityEnergy](#) = local climate action, energy security & resilience, economic growth, delivering net-zero, benefit people & places. Common sense really.



You and 8 others

1 7 10

Sheffield Renewables @s... · 20 Mar
[@Power4PeopleUK](#)

||| ○ <





Membership



Members

- ❁ **240** last year
- ❁ **16 people withdrew** all their **shares** last year
- ❁ 6 ex-volunteers have been taken-off the membership register
- ❁ **1 new** volunteer member
- ❁ Total members this year **219**



Election of the Board

Election of the Board

- ❖ Board Members Stepping Down:
 - ❖ **Christine Gilligan** (after 10 years – thank you!)
- ❖ Re-elections
 - ❖ **Paul Cocker** stepping down and standing for re-election
 - ❖ **Erin Lachs** stepping down and standing for re-election
- ❖ Board role changes
 - ❖ **N/A**
- ❖ New board members
 - ❖ No new board members this period
- ❖ New officers
 - ❖ Introducing our new Company Secretary



*thank
you for
attending !*



**community
action**



for our
**energy
future**

Community
Energy
England